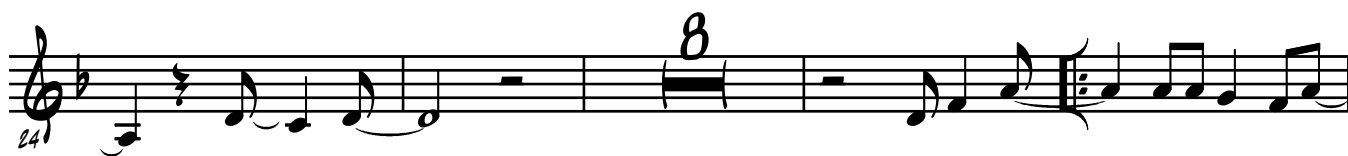


TROMPETTE $\text{Si}\flat$

EYES ON THE PRIZE

TRADITIONAL





Musical staff 1, starting at measure 45. The staff contains a sequence of eighth and quarter notes with rests, ending with a whole note rest.



Musical staff 2, starting at measure 50. The staff contains a sequence of eighth and quarter notes with rests, ending with a whole note rest.



Musical staff 3, starting at measure 55. The staff contains a sequence of eighth and quarter notes with rests, followed by a double bar line, a measure with a '15' above it, and a measure with a '2' above it.



Musical staff 4, starting at measure 74. The staff contains a sequence of eighth and quarter notes with rests, ending with a whole note rest.



Musical staff 5, starting at measure 79. The staff contains a sequence of eighth and quarter notes with rests, ending with a whole note rest.



Musical staff 6, starting at measure 84. The staff contains a sequence of eighth and quarter notes with rests, ending with a whole note rest.



Musical staff 7, starting at measure 89. The staff contains a sequence of eighth and quarter notes with rests, ending with a whole note rest.



Musical staff 8, starting at measure 95. The staff contains a sequence of eighth and quarter notes with rests, ending with a double bar line.